

MONTHLY MEMBERSHIP PROGRESS REPORT

LOCATION ALBERTA

District C 1

Results as of: 2/28/2023

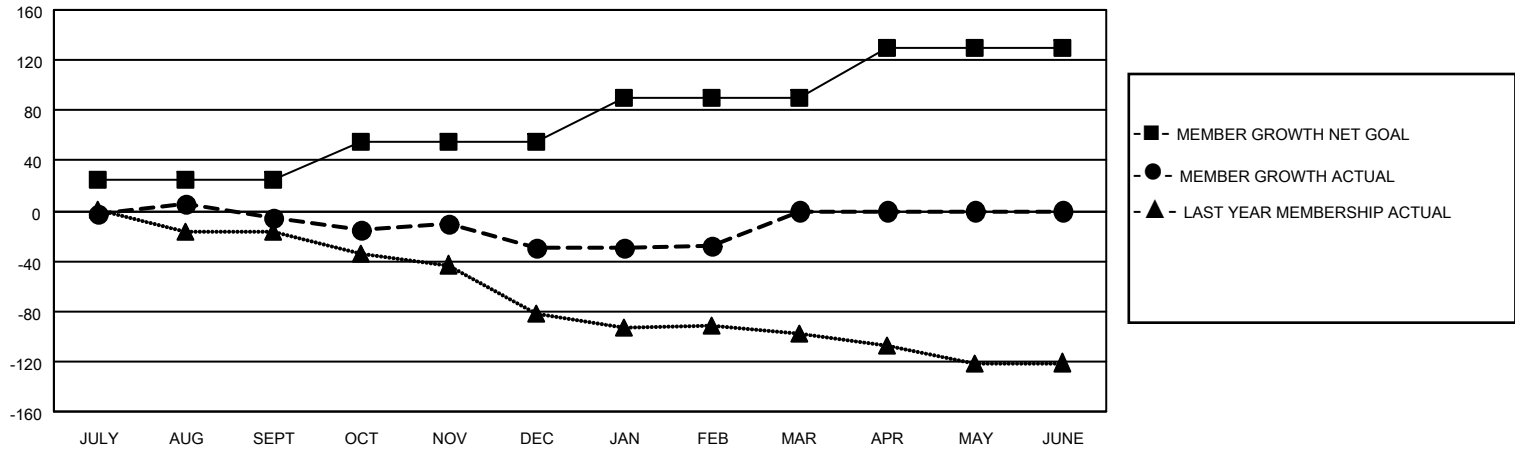
| Clubs | | | |
|-----------------------|---------------|-----------|---------------|
| RESULTS FOR 2022-2023 | | | |
| QUARTER | NEW CLUB GOAL | NEW CLUBS | DROPPED CLUBS |
| JULY/AUG/SEPT | 0 | 0 | 1 |
| OCT/NOV/DEC | 1 | 0 | 0 |
| JAN/FEB/MAR | 0 | 0 | 0 |
| APR/MAY/JUNE | 1 | 0 | 0 |

| Members | | | |
|-----------------------|------------------------|----------------------|---|
| RESULTS FOR 2022-2023 | | | |
| QUARTER | MEMBER GROWTH NET GOAL | MEMBER GROWTH ACTUAL | DROPPED MEMBERS ACTUAL (including transfers) |
| JULY/AUG/SEPT | 25 | 33 | 34 |
| OCT/NOV/DEC | 30 | 63 | 85 |
| JAN/FEB/MAR | 35 | 31 | 26 |
| APR/MAY/JUNE | 40 | 0 | 0 |

GOALS AND ACTUAL NEW CLUBS CUMULATIVE



GOALS AND ACTUAL MEMBERS CUMULATIVE



| | |
|------------------------|------------|
| DROPPED CLUBS: 1 | |
| <u>DROPPED MEMBERS</u> | |
| DECEASED | 16 |
| CLUB CANCELLED | 0 |
| OTHER | 129 |
| TOTAL | 145 |

35 CLUBS OF 90 ADDED 1 OR MORE NEW MEMBERS

[CLICK HERE FOR CUMULATIVE MEMBERSHIP DATA](#)

| <u>GENDER DISTRIBUTION</u> | |
|-------------------------------------|----------------|
| MALE | 1,003 (61.69%) |
| FEMALE | 623 (38.31%) |
| NON BINARY | 0 (0.00%) |
| PREFER NOT TO ANSWER | 0 (0.00%) |
| TOTAL FAMILY UNIT MEMBERS 331 | |
| FAMILY MEMBERS PAYING HALF DUES 167 | |